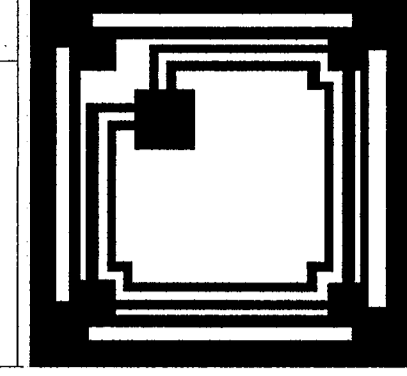




Revisions: _____
 By: _____

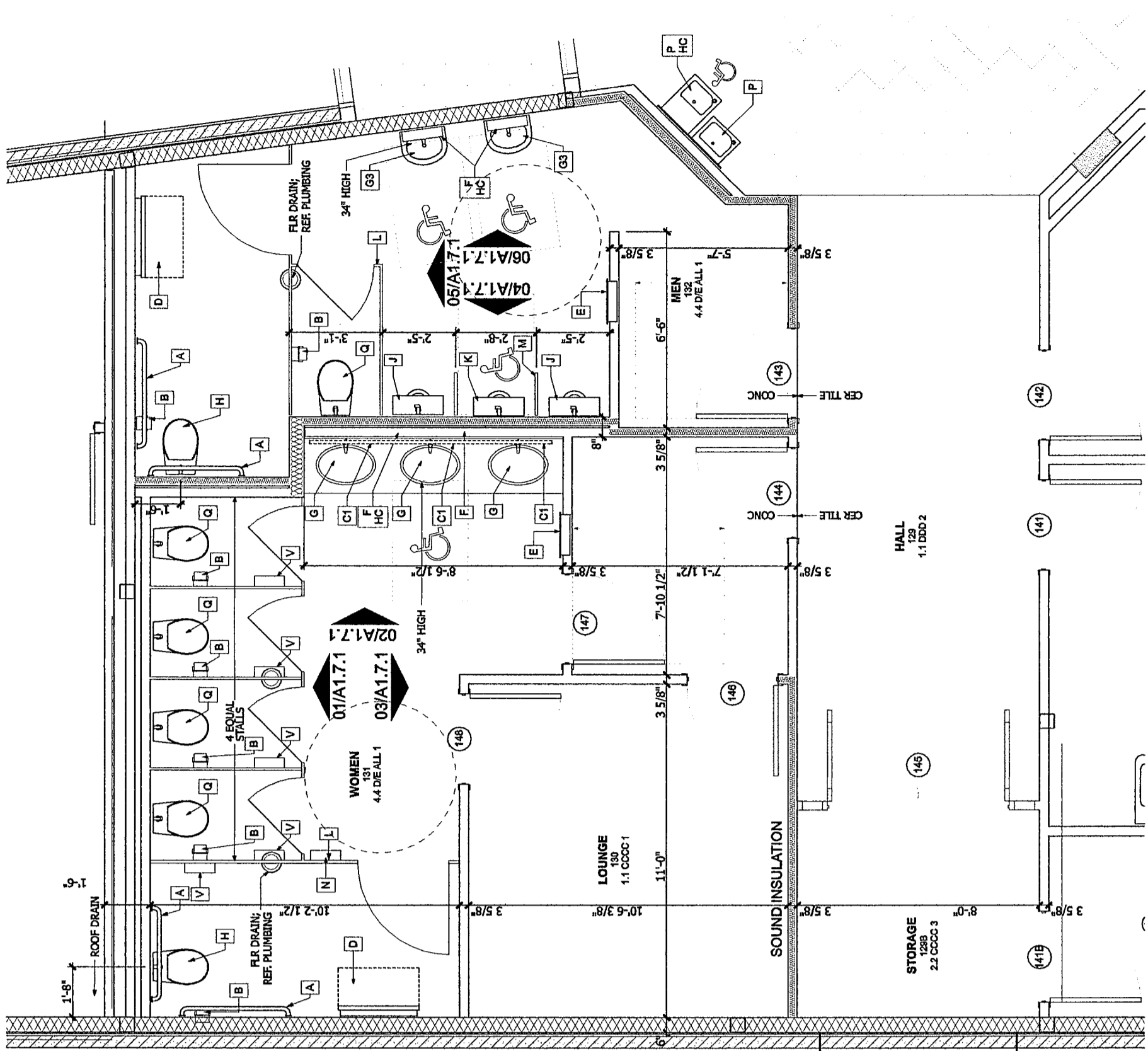


HALLUM ARCHITECTS, INC.
 6040 CAMP BOWIE BLVD SUITE 17
 FORT WORTH, TEXAS 76116
 PHONE: 817.332.2422 FAX: 817.338.1949
 email: info@hallumarch.com

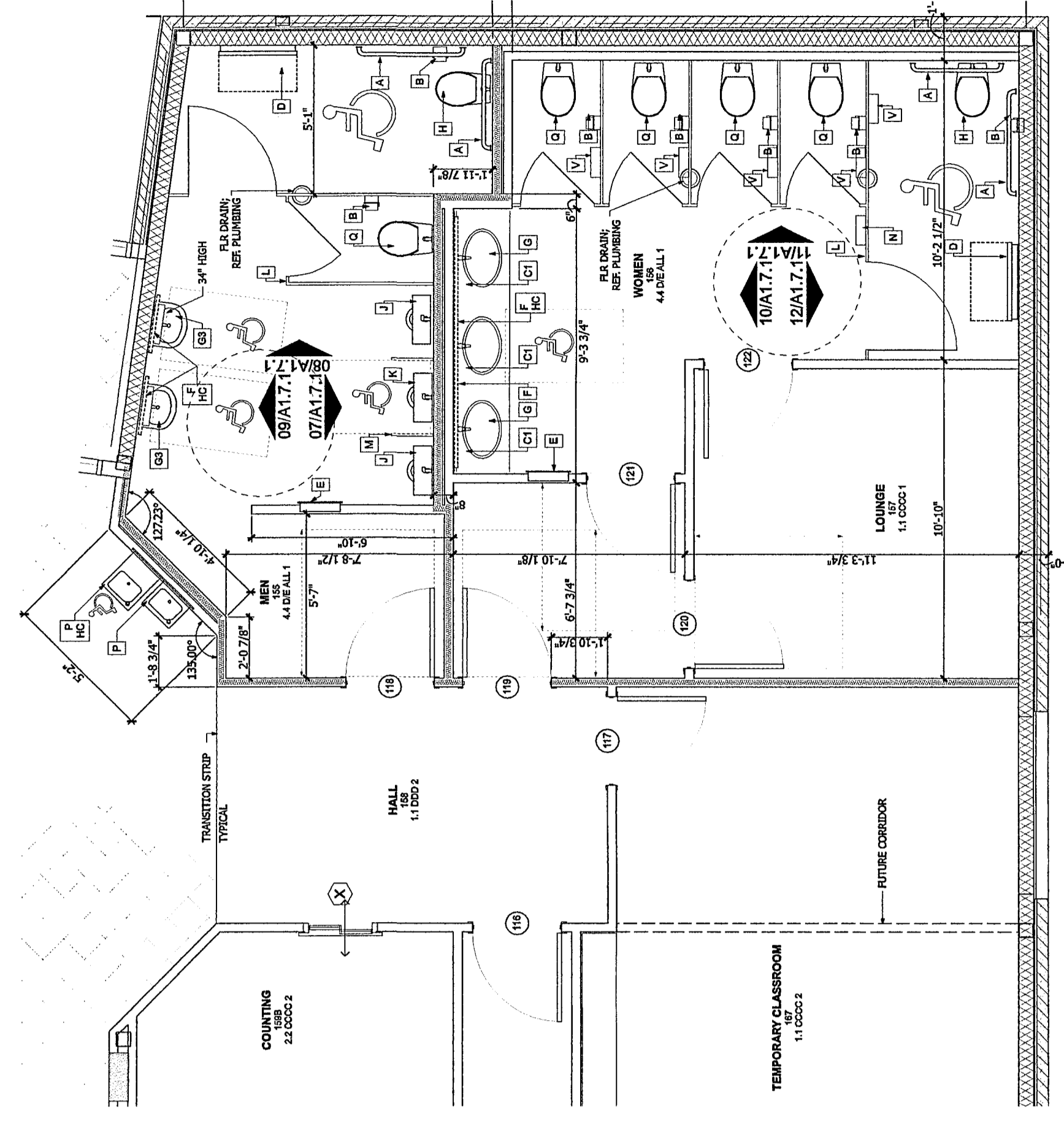
NEW WORSHIP FACILITIES
 EAST SIDE CHURCH OF CHRIST
 MLK @ HWY 183, AUSTIN, TEXAS

AUDITORIUM
 DETAIL PLANS

Date: 5-12-08
 Scale: 1/4" = 1'-0"
 Drawn: _____
 Job: 2008-05
 Sheet Number:
A1.1.5

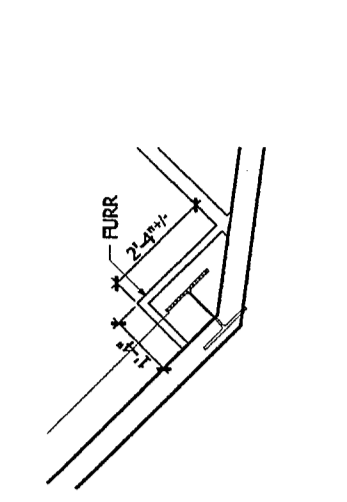


01 RESTROOM 131 & 132
 SCALE: 1/4" = 1'-0"

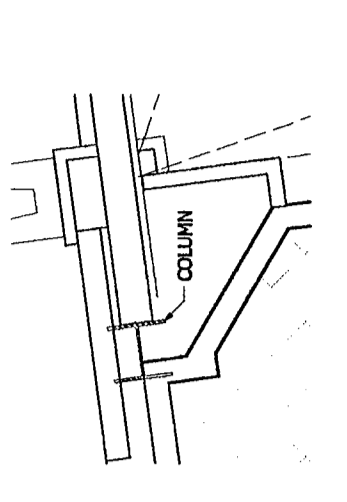


02 RESTROOM 155 & 156
 SCALE: 1/4" = 1'-0"

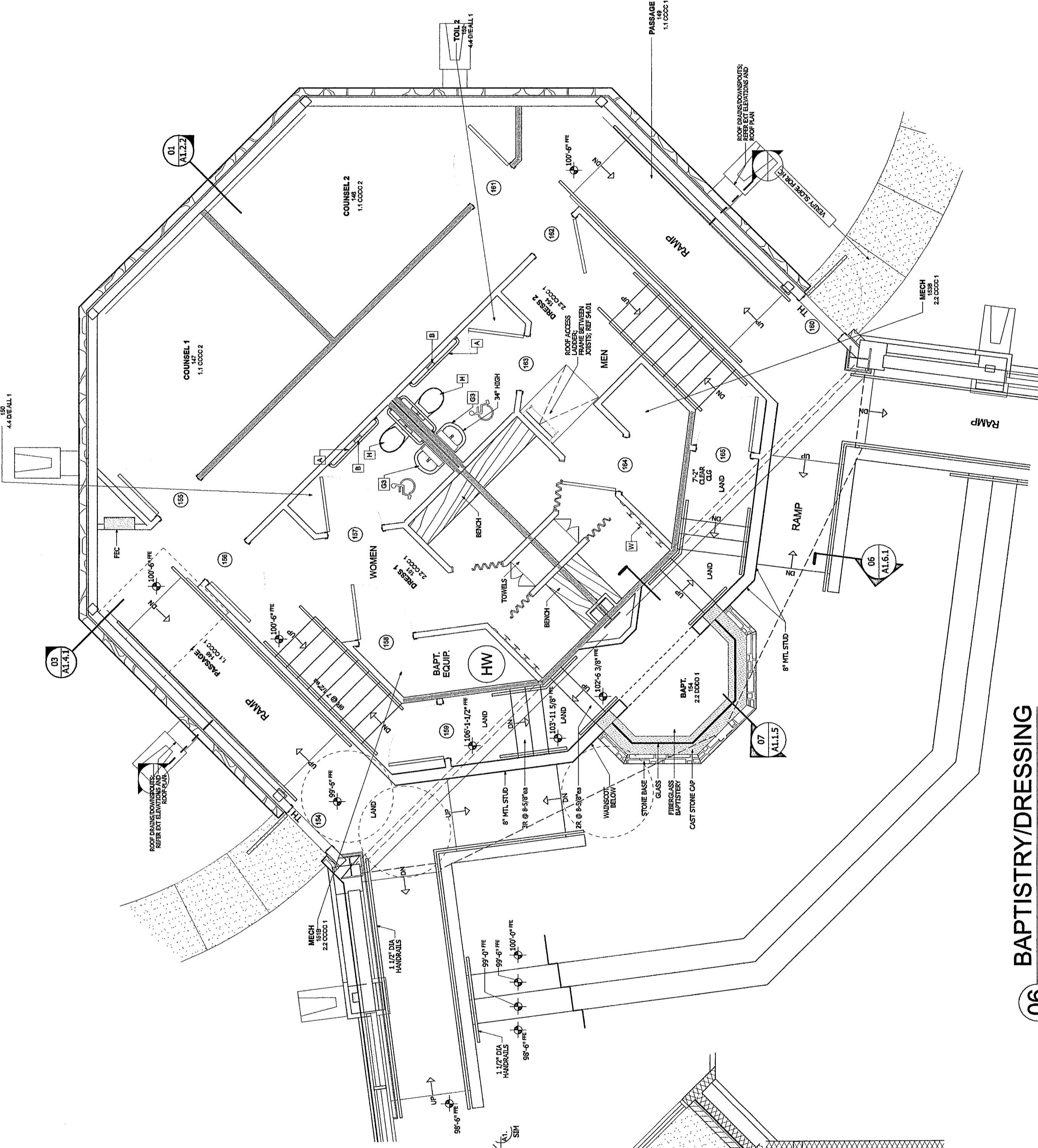
- REST ROOM LEGEND**
- 1. GRAB BARS
 - 2. TOILET PAPER HOLDER
 - 3. RECYCLABLE SOAP
 - 4. SURFACE MOUNTED SOAP DISPENSER
 - 5. 80% CHANGING STATION
 - 6. 1" FLOOR MOUNTED TOILET
 - 7. WATER DISPENSER
 - 8. MIRROR
 - 9. SINK TYPE L1
 - 10. SINK TYPE L2
 - 11. SINK TYPE L3 WALL MOUNT P.C.
 - 12. 1" FLOOR MOUNTED TOILET
 - 13. STAIRCASE URINAL
 - 14. STAIRCASE URINAL
 - 15. HANDICAP URINAL
 - 16. TOILET PARTITION
 - 17. URINAL PARTITION
 - 18. 1" FLOOR MOUNTED TOILET
 - 19. 1" FLOOR MOUNTED TOILET
 - 20. CHILDREN TRAINING TOILET
 - 21. WATER FASTER
 - 22. MOP SINK
 - 23. SHOWER UNIT
 - 24. PAPER TOWEL HOLDER
 - 25. MTL SINK
 - 26. MOP SINK
 - 27. PROTECTIVE COVER
 - 28. WALL MOUNT SOAP PAK



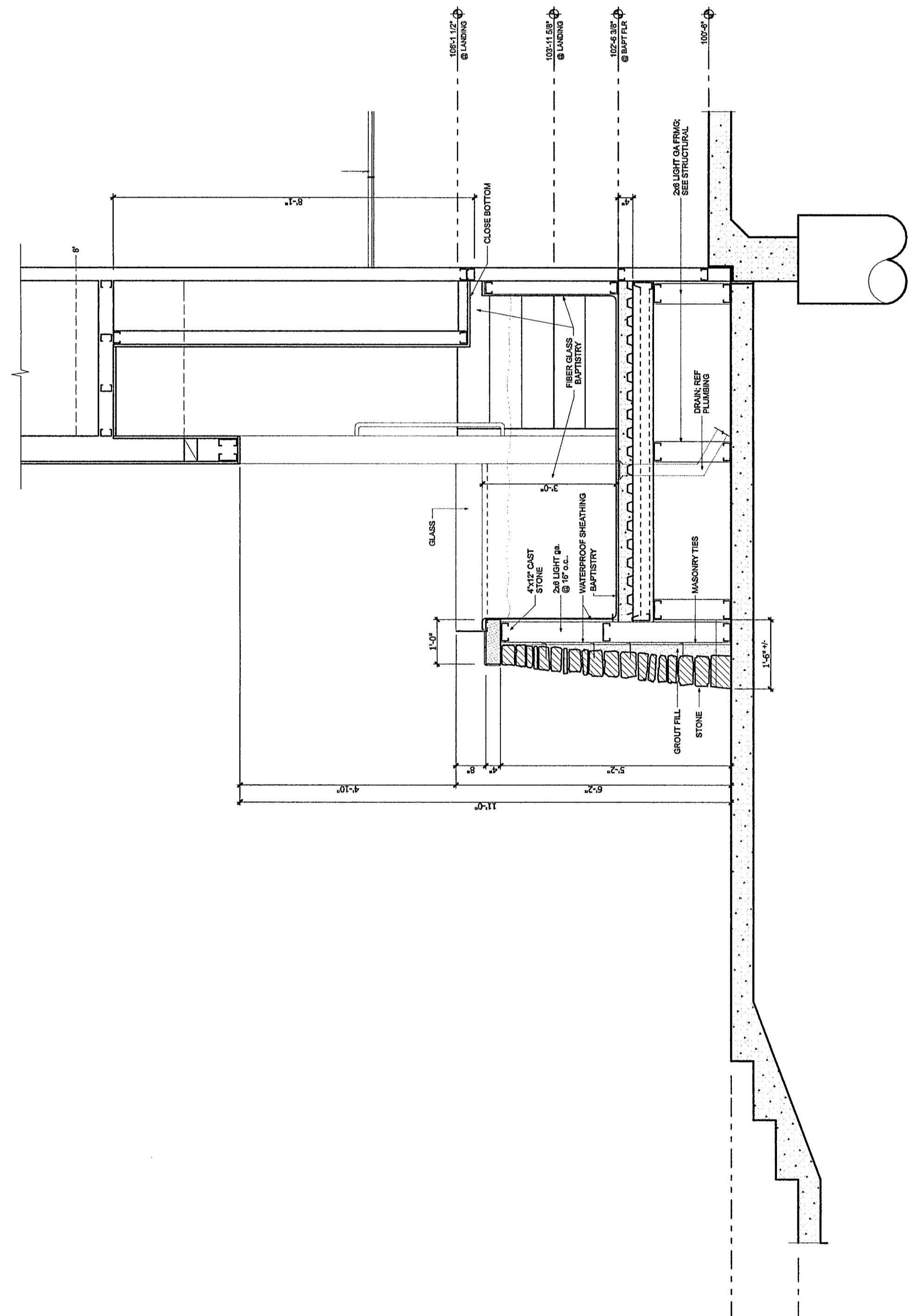
03 INT. COLUMN
 SCALE: 1/4" = 1'-0"



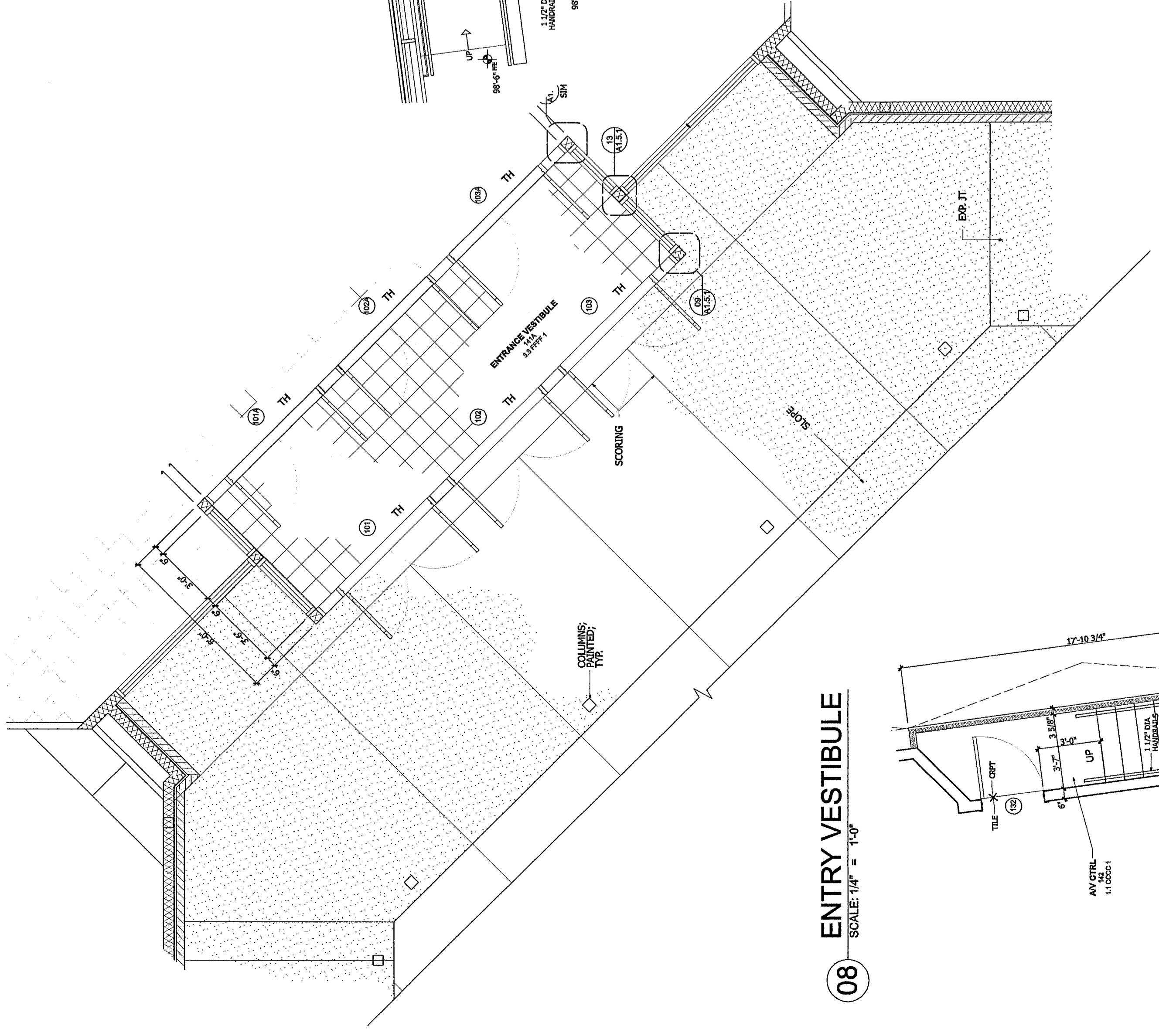
04 EXT. COLUMN
 SCALE: 1/4" = 1'-0"



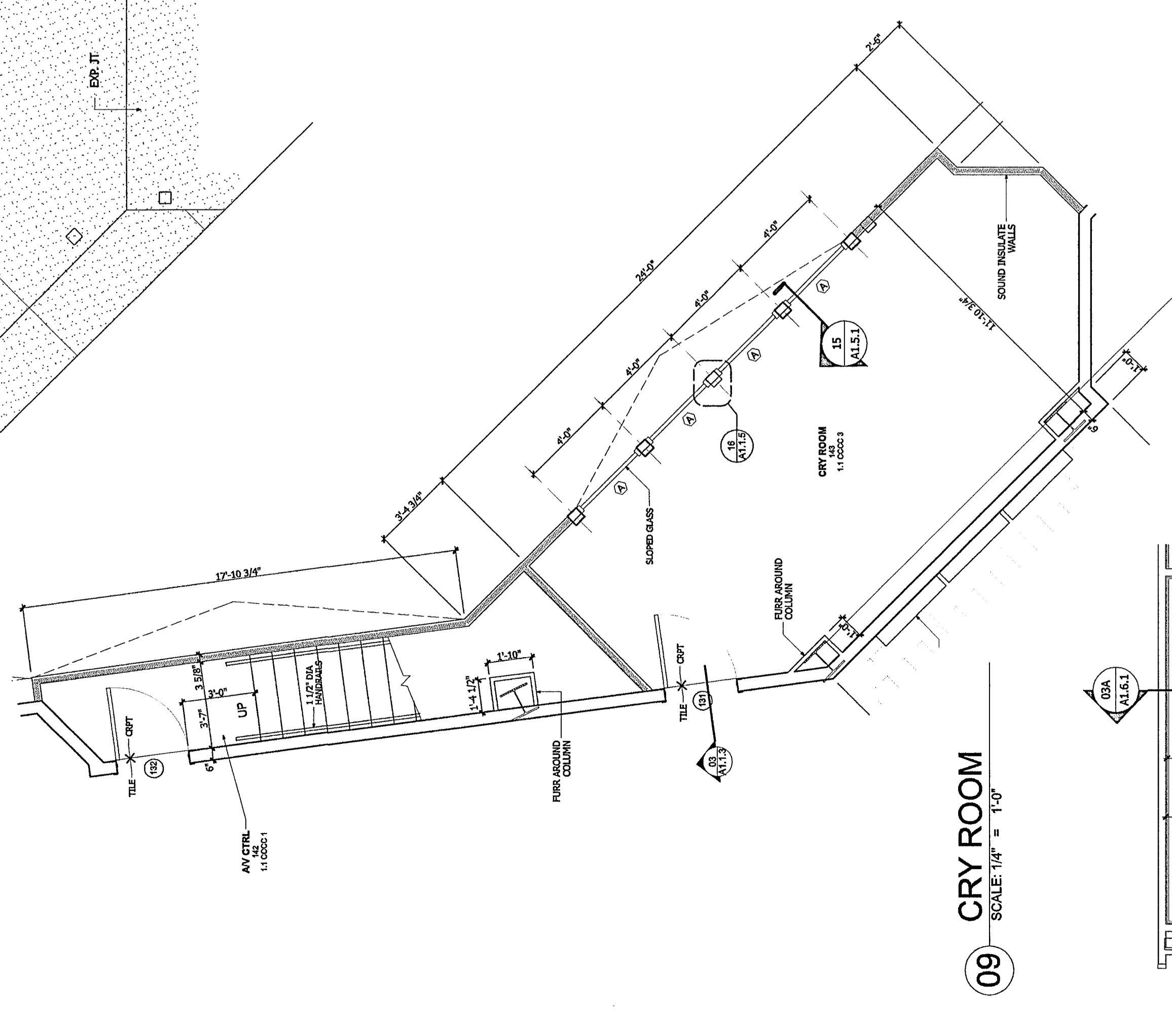
06 BAPTISTRY/DRESSING
 SCALE: 1/4" = 1'-0"



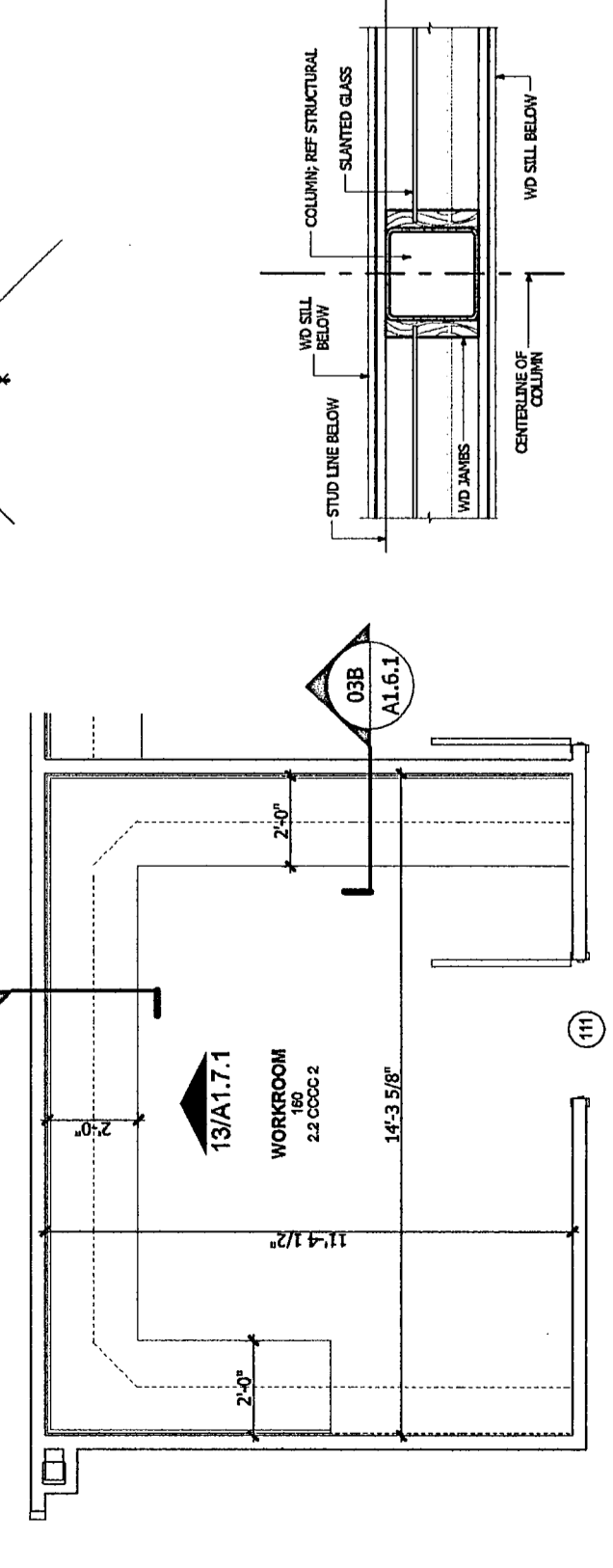
07 BAPTISTRY SECTION
 SCALE: 1/2" = 1'-0"



08 ENTRY VESTIBULE
 SCALE: 1/4" = 1'-0"



09 CRY ROOM
 SCALE: 1/4" = 1'-0"



10 COL @ WDW
 SCALE: 1/4" = 1'-0"

11 WORKROOM
 SCALE: 1/4" = 1'-0"