

04 LIGHT GAGE TRUSS "D"
NOT TO SCALE

DETAIL NOTES:
1. TRUSS WEB PROFILE TO BE DETERMINED BY TRUSS MANUFACTURER. WIND PRESSURES SPECIFIED ARE GROSS PRESSURES. SPECIFIED DEAD LOAD DOES NOT INCLUDE THE TRUSS SELF-WEIGHT. TRUSS MANUFACTURER SHALL DESIGN TRUSSES FOR THE MOST CRITICAL LOAD COMBINATION. TRUSS MANUFACTURER SHALL DESIGN TRUSSES SUCH THAT THE DEFLECTIONS DO NOT EXCEED L/260 OF THE SPAN FOR TOTAL LOAD.
2. TOP CHORD OF LIGHT GAGE TRUSS WILL BE FLAT. ROOF SLOPE IS ACHIEVED THROUGH TAPERED INSULATION. RE. ARCH.
3. DRAWINGS TO COORDINATE ALL OPENINGS FOR MECHANICAL COMPONENTS WITH MEP DRAWINGS. TRUSS WEB PROFILE MAY NOT INDICATE ALL OPENINGS REQUIRED.

05 LIGHT GAGE TRUSS "E"
NOT TO SCALE

DETAIL NOTES:
1. TRUSS WEB PROFILE TO BE DETERMINED BY TRUSS MANUFACTURER. WIND PRESSURES SPECIFIED ARE GROSS PRESSURES. SPECIFIED DEAD LOAD DOES NOT INCLUDE THE TRUSS SELF-WEIGHT. TRUSS MANUFACTURER SHALL DESIGN TRUSSES FOR THE MOST CRITICAL LOAD COMBINATION. TRUSS MANUFACTURER SHALL DESIGN TRUSSES SUCH THAT THE DEFLECTIONS DO NOT EXCEED L/260 OF THE SPAN FOR TOTAL LOAD.
2. TOP CHORD OF LIGHT GAGE TRUSS WILL BE FLAT. ROOF SLOPE IS ACHIEVED THROUGH TAPERED INSULATION. RE. ARCH.
3. DRAWINGS TO COORDINATE ALL OPENINGS FOR MECHANICAL COMPONENTS WITH MEP DRAWINGS. TRUSS WEB PROFILE MAY NOT INDICATE ALL OPENINGS REQUIRED.

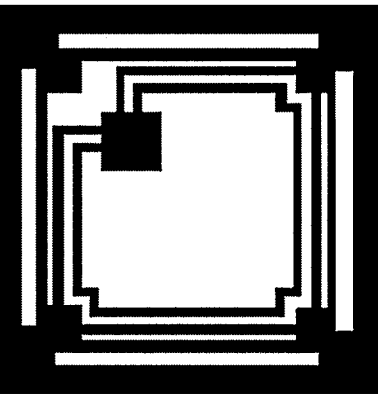
06 LIGHT GAGE TRUSS "F"
NOT TO SCALE

DETAIL NOTES:
1. TRUSS WEB PROFILE TO BE DETERMINED BY TRUSS MANUFACTURER. WIND PRESSURES SPECIFIED ARE GROSS PRESSURES. SPECIFIED DEAD LOAD DOES NOT INCLUDE THE TRUSS SELF-WEIGHT. TRUSS MANUFACTURER SHALL DESIGN TRUSSES FOR THE MOST CRITICAL LOAD COMBINATION. TRUSS MANUFACTURER SHALL DESIGN TRUSSES SUCH THAT THE DEFLECTIONS DO NOT EXCEED L/260 OF THE SPAN FOR TOTAL LOAD.
2. TOP CHORD OF LIGHT GAGE TRUSS WILL BE FLAT. ROOF SLOPE IS ACHIEVED THROUGH TAPERED INSULATION. RE. ARCH.
3. DRAWINGS TO COORDINATE ALL OPENINGS FOR MECHANICAL COMPONENTS WITH MEP DRAWINGS. TRUSS WEB PROFILE MAY NOT INDICATE ALL OPENINGS REQUIRED.

07 LIGHT GAGE TRUSS "G"
NOT TO SCALE

DETAIL NOTES:
1. TRUSS WEB PROFILE TO BE DETERMINED BY TRUSS MANUFACTURER. WIND PRESSURES SPECIFIED ARE GROSS PRESSURES. SPECIFIED DEAD LOAD DOES NOT INCLUDE THE TRUSS SELF-WEIGHT. TRUSS MANUFACTURER SHALL DESIGN TRUSSES FOR THE MOST CRITICAL LOAD COMBINATION. TRUSS MANUFACTURER SHALL DESIGN TRUSSES SUCH THAT THE DEFLECTIONS DO NOT EXCEED L/260 OF THE SPAN FOR TOTAL LOAD.
2. TOP CHORD OF LIGHT GAGE TRUSS WILL BE FLAT. ROOF SLOPE IS ACHIEVED THROUGH TAPERED INSULATION. RE. ARCH.
3. DRAWINGS TO COORDINATE ALL OPENINGS FOR MECHANICAL COMPONENTS WITH MEP DRAWINGS. TRUSS WEB PROFILE MAY NOT INDICATE ALL OPENINGS REQUIRED.

Revisions:	
By:	



HALLUM ARCHITECTS, INC.
6040 CAMP BOWIE BLVD SUITE 17
FORT WORTH, TEXAS 76116
PHONE: 817.332.2422 FAX: 817.338.1949
email: info@hallumarch.com

NEW WORSHIP FACILITIES & EDUCATION BUILDING
EAST SIDE CHURCH OF CHRIST
MLK @ HWY 183, AUSTIN, TEXAS

TRUSS ELEVATIONS	Date: 03/20/08
	Scale: As Shown
	Drawn: JSQ
	Job: 2006-05
	Sheet Number: S4.13



SSI
Structural Solutions, Inc.
Engineering Consultants
8410 Southwest Blvd., Suite 210
Dallas, Texas 75225
817-569-0070 817-569-0075 fax
© COPYRIGHT 2008 BY STRUCTURAL SOLUTIONS, INC.